

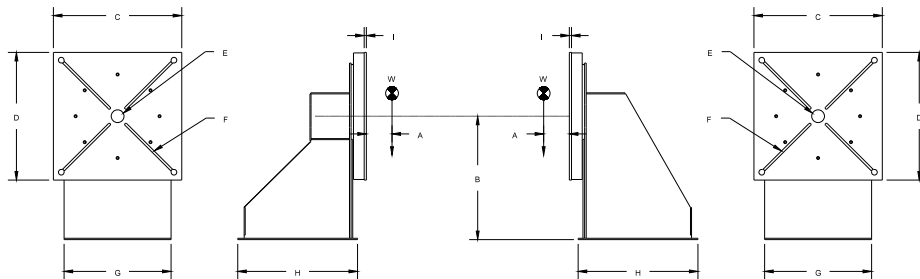
PANDJIRIS, INC

5151 Northrup • St. Louis, MO 63110 • (314) 776-6893

60,000 LB HEAD AND TAILSTOCK POSITIONER (MODEL HTS-600)

The **Model HTS-600 Head and Tailstock Positioner** is a quality Head and Tailstock designed to support and rotate 60,000 pounds. The frames are rigid box section, all welded construction. Additional rigidity is accomplished by utilizing oversize anti-friction bearings and by having a welded connection between table and kingpin. The table is driven by an A.C. Brakemotor, through roller chain and sprockets to a high efficiency worm reducer and a final spur gear stage.

- Supporting Capacity 60,000 pounds total, 30,000 pounds each end at 12" max overhang from face of table.
- Rotation Torque 360,000 inch pounds.
- Rotation Motor 10 H.P. A.C. Brakemotor.
- Rotation Speed 0.8 RPM constant speed.
- Net Weight 14,500 pounds for head and tailstock.
- Electricals 230/460 volt, three phase, 60 cycle input with 115 volt control circuits and conforms to the National Electrical Code. Thermal overload protection in reversing starter. Momentary push button controls for "Forward-Reverse" are contained in a pendant station with 25 ft. of rubber covered cable.



A	Overhung C.G.	12"	G	Width	HS	61"
B	Rotation Centerline	63-3/4"			TS	61"
C	Table	59-1/2"	H	Length	HS	54"
D	Table	59-1/2"			TS	54"
E	Pilot Hole	6" x 1/4"	I	Table Thickness	3/4"	
F	(4) "T" Slots to accept Standard ANSI 1-1/4" "T" Nut		W	Weight Capacity Each/Total	30,000/60,000	

Terms: Pandjiris, Inc. standard terms and conditions apply, f.o.b. Factory, St. Louis, Missouri, or designated ship point.

Delivery: Consult Factory.

PRICE LIST

For Bulletin No. : HTS-76/593
 Effective Date : June 1, 1995
 Page Number : H-13

PANDJIRIS, INC

5151 Northrup • St. Louis, MO 63110 • (314) 776-6893

MODEL HTS-600 HEAD AND TAILSTOCK Optional Accessories For Variable Speed HTS-600

For variable speed .030 to .50 RPM, 230-460 Volts,
Single Phase, 60 Hz

Foot switch with compatible plug for Forward/Stop/Reverse
(speed potentiometer on hand pendant)

Foot switch, Fast-Slow with compatible plug

Preset digital tachometer with compatible plug reads speed in RPM

Dialweld®, (shows linear speed in IPM for diameter set on diameter selector.
Dial diameter to be welded, dial weld speed, table RPM is automatically
set to weld diameter at selected welding speed) digital
meter with compatible plug reads IPM or CmPM

Tach feedback for precision speed control

For special voltages

25' Extension Cable with compatible plugs for standard
pendants and accessories

Model 600 PT Copper Welding Ground

Model 1200 PT Copper Welding Ground

Welding grounds available on constant speed and variable speed units.

Terms: Pandjiris, Inc. standard terms and
conditions apply, f.o.b. Factory, St. Louis,
Missouri, or designated ship point.

Delivery: Consult Factory

PRICE LIST

For Bulletin No. : HTS-76/593
Effective Date : Oct. 28, 1999
Page Number : H-14