

PANDJIRIS, INC

5151 Northrup • St. Louis, MO 63110 • (314) 776-6893

SERIES "1100" MANIPULATOR

The **Series "1100" Manipulator**, size 11 x 11, is mounted on a bolt-down base. It has an 11' nominal arc height and a 11' horizontal boom stroke at a variable speed of 3" to 116" per minute. This is electronically controlled with dynamic braking beginning 19-1/4" from the centerline of the column and 360 degree manual column rotation. The standard electricals are 230/460 volts, 3 phase, 60 cycle with 115 control. Wired to conform to National Electrical Code Standards.

Vertical Boom Travel 16-7/8" Minimum, 11' 9-7/8" Maximum, Floor to Bottom of Boom.

Hoist Speed 48 IPM Constant Speed

Hoist Motor 1/2 H.P. AC Brakemotor

Horizontal Boom Stroke 11' Stroke beginning 19-1/4" From Center of Column

Horizontal Boom Speed 3 to 116 IPM Variable Speed

Horizontal Boom Motor 1/2 H.P. DC Motor

Anti-Fall Device Spring loaded, self energizing pawl mounted on the crosshead and a column mounted rack.

Column Rotation Manual 360 degree rotation with a manually operated screw friction lock.

Bolt Down Base Size 24" x 24", with (8) 11/16" Drilled holes on 22-1/4" bolt center.

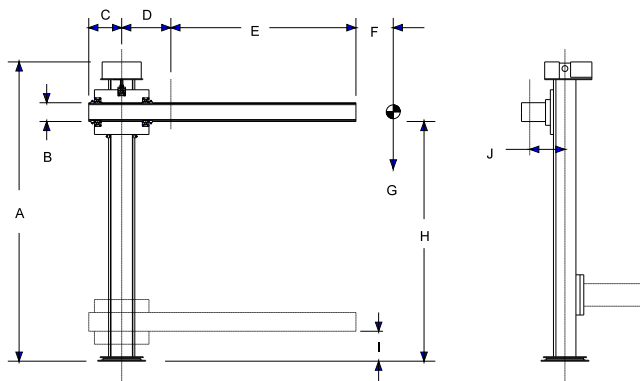
Control Pendant control equipped with joystick for Boom "Up-Down-In-Out".

Boom Speed Potentiometer and a Weld-Rapid Selector Switch. Pendant Controls operate on 115 volts on 25' of rubber covered cable.

Electrical Operates on 230/460 input power. Specify voltage when ordering. All wiring is to National Electrical Code Standards. Draws 7.6 amps @ 230 VAC.

The following price is for the basic manipulator, including all motors and controls, wired and ready to operate. Price does not include any welding heads, welding controls power source, flux recovery systems, or interconnecting cables, nor does it include the mounting or wiring of these items.

(For welding equipment and mounting thereof, consult factory.)



A	Overall Height	15' 1-5/16"
B	Boom Track Blade	13-1/8"
C	Min. Rear Clearance	19-1/4"
D	Boom Retract	19-1/4"
E	Boom Stroke	11'
F	C.G. Distance	18"
G	Max. Load End/Total	500/1000
H	Max. Boom Height	11' 9-7/8"
I	Min. Boom Height	16-7/8"
J	Boom Centerline Offset	11-1/8"

Terms: Pandjiris, Inc. standard terms and conditions apply, f.o.b. Factory, St. Louis, Missouri, or designated ship point.

Delivery: Consult Factory
Shipping weight, 5,000 lbs.

PRICE LIST

For Bulletin No. : MANP 393-1
Effective Date : June 1, 1995
Page Number : D-7

PANDJIRIS, INC

5151 Northrup • St. Louis, MO 63110 • (314) 776-6893

"1100" SERIES MANIPULATOR Options and Accessories

For column or boom addition/deletion

For free standing base

Preset digital tachometer in manipulator joystick hand pendant, reads in IPM or CmPM, for boom

For variable speed hoist, 2 to 46 IPM

For "Step-Over" control, allows indexing of boom movement for overlay operations etc

For flashing red light at column top and boom end

For special voltages

Power rotation of column for special applications, variable speed at .004 to .12 RPM

For support platform bolted to column for welding power source:

Standard 40x42 for single head mounting

Oversized 44x60 for multiple head mounting

For turntable to support wire drum or reel payoff (requires platform listed above)

For gas bottle holder bracket, supports two bottles

For 1-1/2 H.P. Flux recovery unit - installed (including hose)

For 3 H.P. Flux recovery unit - installed (including hose)

For 5 H.P. Flux recovery unit - installed (including hose)

For 7-1/2 H.P. Flux recovery unit - installed (including hose)

WELD EQUIPMENT MOUNTING CHARGES

Pandjiris will mount and integrate welding head and control packages on the above manipulator. The configuration of the mounting will typically include installation of the wire drive, torch wire reel, flux hopper, wire drive control, and connection of all cables and hoses between the power source and wire feed control required for proper operation. Other accessories such as AVCs, slides, swivels etc. can also be mounted for an extra charge.

To Mount a Single Wire SUB-ARC package

To Mount a Twin Wire SUB-ARC package

To Mount a Tandem SUB-ARC package

To mount a pressurized flux feed system

To Mount a MIG package

To Mount a Cold Wire TIG package

To Mount a Fusion TIG package

To Mount an AVC with the above TIG packages

To Mount a dual axis seam tracker

To mount wire reel at aft end of boom with insulated wire guide conduit running the length of the boom, add per foot of boom stroke

Terms: Pandjiris, Inc. standard terms and conditions apply, f.o.b. Factory, St. Louis, Missouri, or designated ship point.

Delivery: Consult Factory

PRICE LIST

For Bulletin No. : MANP 393-1

Effective Date : Aug. 1, 1996

Page Number : D-8