

PANDJIRIS, INC

5151 Northrup • St. Louis, MO 63110 • (314) 776-6893

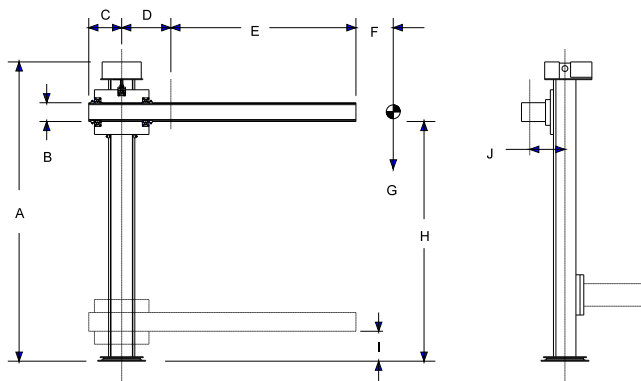
DOUBLE 8 MANIPULATOR

The **Double 8 Manipulator**, size 8 x 8, is mounted on a bolt-down base. It has an 8' nominal arc height and a 8' horizontal boom stroke at a variable speed of 3" to 110" per minute. This is electronically controlled with dynamic braking beginning 21" from the centerline of the column and 360 degree manual column rotation. The standard electricals are 230/460 volts, 3 phase, 6/3 Amps, 50/60 Hz with 24 volt controls. Wired to conform to National Electrical Code Standards.

- Vertical Boom Travel** 20-5/8" Minimum, 112" Maximum, Floor to Bottom of Boom.
 - Hoist Speed 73 IPM Constant Speed
 - Hoist Motor 1/2 H.P. AC Brakemotor
- Horizontal Boom Stroke** 8' Stroke beginning 21" From Center of Column
 - Horizontal Boom Speed 3 to 110 IPM Variable Speed
 - Horizontal Boom Motor 1/3 H.P. DC Motor
- Anti-Fall Device** Spring loaded, self energizing pawl mounted on the crosshead engages column face.
- Column Rotation** Manual 360 degree rotation with a manually operated screw friction lock.
- Bolt Down Base** Size 15" x 15", with (4) 13/16" Drilled holes on 13" square.
- Control** Pendant control equipped with joystick for Boom "Up-Down-In-Out". Boom Speed Potentiometer and a Weld-Rapid Selector Switch. Pendant Controls operate on 115 volts on 25' of rubber covered cable.
- Electrical** 230/460 volts, 6/3 Amps, 50/60 Hz

The following price is for the basic manipulator, including all motors and controls, wired and ready to operate. Price does not include any welding heads, welding controls power source, flux recovery systems, or interconnecting cables, nor does it include the mounting or wiring of these items.

(For welding equipment and mounting thereof, consult factory.)



A	Overall Height	11' 10-3/4"
B	Boom Track Blade	7"
C	Min. Rear Clearance	12-5/8"
D	Boom Retract	21"
E	Boom Stroke	8'
F	C.G. Distance	18"
G	Max. Load End/Total	300/500
H	Max. Boom Height	112"
I	Min. Boom Height	20-5/8"
J	Boom Centerline Offset	7-7/16"

Terms: Pandjiris, Inc. standard terms and conditions apply, f.o.b. Factory, St. Louis, Missouri, or designated ship point.

Delivery: Consult Factory
Shipping weight, 1,200 lbs.

PRICE LIST	
For Bulletin No.	: MANP 393-1
Effective Date	: Jan 22, 2002
Page Number	: D-5

PANDJIRIS, INC

5151 Northrup • St. Louis, MO 63110 • (314) 776-6893

DOUBLE 8 MANIPULATOR Options and Accessories

For column or boom addition/deletion

For free standing base

Preset digital tachometer in manipulator joystick hand pendant, reads in IPM or CmPM, for boom

For variable speed hoist, 3 to 73 IPM

For "Step-Over" control, allows indexing of boom movement for overlay operations etc.

For flashing red light at column top and boom end

For special voltages

For 1-1/2 H.P. Flux recovery unit - installed (including hose)

For 3 H.P. Flux recovery unit - installed (including hose)

For 5 H.P. Flux recovery unit - installed (including hose)

For 7-1/2 H.P. Flux recovery unit - installed (including hose)

WELD EQUIPMENT MOUNTING CHARGES

Pandjiris will mount and integrate welding head and control packages on the above manipulator. The configuration of the mounting will typically include installation of the wire drive, torch wire reel, flux hopper, wire drive control, and connection of all cables and hoses between the power source and wire feed control required for proper operation. Other accessories such as AVCs, slides, swivels etc. can also be mounted for an extra charge.

To Mount a Single Wire SUB-ARC package

To Mount a Twin Wire SUB-ARC package

To Mount a Tandem SUB-ARC package

To mount a pressurized flux feed system

To Mount a MIG package

To Mount a Cold Wire TIG package

To Mount a Fusion TIG package

To Mount an AVC with the above TIG packages

To Mount a dual axis seam tracker

To mount wire reel at aft end of boom with insulated wire guide conduit running the length of the boom, add per foot of boom stroke

Terms: Pandjiris, Inc. standard terms and conditions apply, f.o.b. Factory, St. Louis, Missouri, or designated ship point.

Delivery: Consult Factory

PRICE LIST

For Bulletin No. : MANP 393-1

Effective Date : Jan. 22, 2002

Page Number : D-6