

# PANDJIRIS, INC

5151 Northrup • St. Louis, MO 63110 • (314) 776-6893

## TANKER 150/75 TURNING ROLL

The **Tanker 150 Power Roll, Model TPR-150** has a capacity of 15,000 lbs. turning and 7,500 lbs. support. An electronic variable speed drive allows a welding speed of 3.7 to 74.0 IPM with a field changeable plug-in hand pendant. This includes "Forward-Stop-Reverse-Weld/Rapid" buttons and a speed adjustment potentiometer on 25' of cable to handle workpieces from 3-1/2" to 144" diameter. The standard electricals are 115 volts, single phase, 60 cycle, draws 10 amps. Wired to the National Electrical Code Standards.

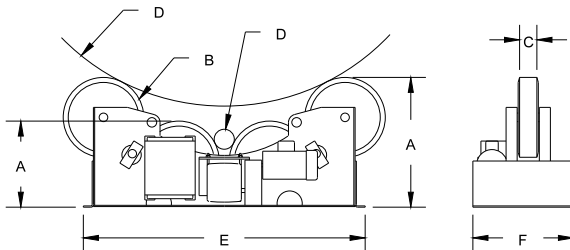
- Turning Capacity ..... 15,000 lbs.
- Tractive Effort ..... 693 lbs.
- Load Capacity ..... 7,500 lbs.
- Pipe Diameter Range ..... 3.5" thru 144"
- Speed Range ..... 3.7 to 74.0 IPM
- Motor Horse Power Rating ..... 1/2 HP
- Wheel Diameter ..... 16"
- Combined Wheel Face ..... 4"

The **TIR/75 Tanker 75 Idler Roll** has 7,500 lbs. support capacity.

- Weight Capacity of TIR/75 Idler Roll ..... 7,500 lbs
- Weight Capacity of (1) TPR/150 Power Roll with (1) TIR/75 Idler Roll ..... 15,000 lbs

POWER ROLL		
A	Wheel Height	17-1/4" & 26"
B	Wheel Diameter	16"
C	Wheel Face	4"
D	Pipe Diameter Range	3-1/2" - 144"
E	Frame Length	64"
F	Frame Width	20"

IDLER ROLL		
A	Wheel Height	17-1/4" & 26"
B	Wheel Diameter	16"
C	Wheel Face	4"
D	Pipe Diameter Range	3-1/2" - 144"
E	Frame Length	64"
F	Frame Width	18"



**Terms:** Pandjiris, Inc. standard terms and conditions apply, f.o.b. Factory, St. Louis, Missouri, or designated ship point.

**Delivery:** Consult Factory  
 Approximate shipping weight:  
 Power Roll 700 lbs.  
 Idler Roll 500 lbs.

PRICE LIST	
For Bulletin No.	: Tanker 593
Effective Date	: April 1, 1998
Page Number	: C-9

# **PANDJIRIS, INC**

5151 Northrup • St. Louis, MO 63110 • (314) 776-6893

## **TANKER TURNING ROLL Optional Accessories**

For foot switch with compatible plug for Forward/Stop/Reverse  
(speed potentiometer on hand pendant)

For foot switch, Fast-Slow with compatible plug

For preset digital tachometer with compatible plug reads speed in IPM or CmPM

(4) V-groove wheels on Power Roll, includes modification to frame

(4) V-groove wheels on Idler, includes modification to frame

Riser pad for use on Power Roll with Idler on track

Model "VT" V-track, 10 ft. sections

For special voltages

For 25' Extension Cable with compatible plugs for standard pendants and accessories

### **PRICE LIST**

For Bulletin No. : Tanker 593  
Effective Date : June 1, 1995  
Page Number : C-10