

# PANDJIRIS, INC.

5151 Northrup St. Louis, MO 63110 (314) 776-6893

## MANIPULATOR TRAVEL CARS

Pandjiris offers two styles of manipulator travel cars. They include a manual push car and a series of variable speed travel cars. The manual car rides on an inverted angle "V" track. The powered cars ride on machined rail track. The weight and gauge width of the machined rail tracks vary depending on the load capacity required. Each powered car is equipped with a D.C. Motor controlled by an SCR variable speed D.C. drive capable of delivering travel speeds from 3 to 135 IPM. When integrated with a Pandjiris Manipulator, a pendant control is provided with the travel car and includes a "Forward/Stop/Reverse" selector, a Weld/Rapid selector and a Speed Potentiometer. The pendant cable is provided with sufficient length to mount the pendant on the operating end of the manipulator boom. When ordered separately, the pendant comes with "Forward/Stop/Reverse" buttons, a speed potentiometer, and "Fast" button on a 25' cable. Rail clips are provided on all power cars to prevent tipping of the car. The standard electricals are 230/460 volts, 3 phase, 60 cycle when integrated with a manipulator, and 115 volts when ordered separately. Wired to conform to National Electrical Code Standards.

### MANUAL PUSH CAR

Track gauge	42" Inverted angle "V" track
Deck height	8-5/8" From floor when mounted on "VT" track
Deck surface	50-1/2" Wide x 48" Long
Car weight	1,115 lbs.

### MANUAL PUSH CAR FOR DOUBLE 8 MANIPULATOR

Track gauge	42" Inverted angle "V" track
Deck height	9" From floor when mounted on "VT" track
Deck surface	50-1/2" Wide x 48" Long
Car weight	2,400 lbs.

### MODEL 3042 VSC

Track gauge/type	42" Gauge A.S.C.E. 30# Machined rail track
Deck height	11-1/4" From floor when mounted on Model 3042 track
Deck surface	52-1/2" Wide x 77 Long
Car weight	2,825 lbs.

### MODEL 30565 VSC

Track gauge/type	56-1/2" Gauge A.S.C.E. 30# Machined rail track
Deck height	17-1/4" From floor when mounted on Model 30565 track
Deck surface	72" wide x 78" long
Car weight	7,000 lbs.

### MODEL 60565 VSC

Track gauge/type	56-1/2" Gauge A.S.C.E. 60# Machined rail track
Deck height	18-5/8" From floor when mounted on Model 60565 track
Deck surface	72" wide x 78" long
Car weight	7,000 lbs.

### MODEL 60840 VSC

Track gauge/type	84" Gauge A.S.C.E. 60# Machined rail track
Deck height	24-7/8" From floor when mounted on Model 60840 track
Deck surface	101" wide x 118" long
Car weight	19,000 lbs.

**Terms:** Pandjiris, Inc. Standard terms and conditions apply. f.o.b. Factory, St. Louis, Missouri, or designated ship point

**Delivery:** Consult Factory

#### PRICE LIST

Effective Date	:	June 2016
Page No.	:	D-13

# PANDJIRIS, INC.

5151 Northrup St. Louis, MO 63110 (314) 776-6893

## MANIPULATOR TRAVEL CAR OPTIONS AND TRACK

### TRAVEL CAR OPTIONS:

Overtravel limit switch

Spring loaded copper ground shoes, 1,000-amp capacity

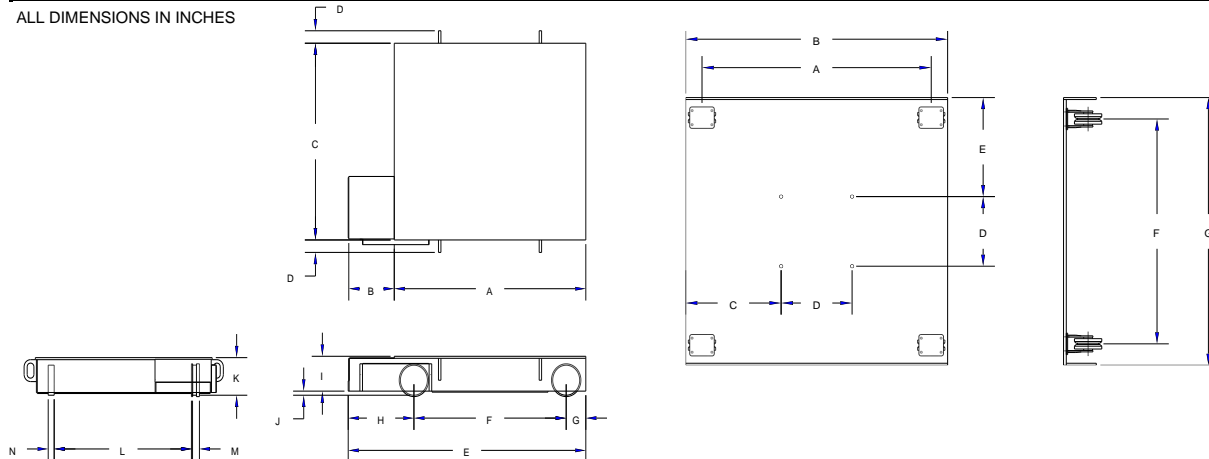
Track wiper brushes, clears track of flux and other debris

Digital Tachometer speed indicator, calibrated in IPM or CmPM

**Steel Power Cable Track, add for each 10' section of track ordered**

MODEL	A	B	C	D	E	F	G	H	I	J	K	L	M	N
PUSH	42-3/4	17-1/2	48	13	18-7/8	42	50-1/2	-	-	-	-	-	-	-
3042	77	13-7/16	52-1/2	4-9/16	87	61-1/2	18-1/4	10-1/2	7-3/4	1/2	8-1/4	43-9/16	2	1-1/2
30565	78	18-3/4	72	4-9/16	96-3/4	62	8	26-3/4	12-3/4	1	13-3/4	56-3/8	2-1/2	1-1/2
60565	78	18-3/4	72	4-9/16	96-3/4	62	8	26-3/4	12-3/4	1	13-3/4	56-3/8	2-1/2	2-3/16
60840	118	23-5/8	101	4-9/16	143-3/4	100	9-1/4	32-7/8	19	1	20	83-7/8	2-1/2	2-3/16

ALL DIMENSIONS IN INCHES



### MANIPULATOR TRACK:

All manipulator track comes in 10' sections and can be bolted together to accommodate any length of travel. Length of track purchased should be actual travel required plus one section. Track is typically grouted and secured to the shop floor with anchor bolts, customer supplied.

"VT" Track for Push Car, per 10' section

3042 Track, per 10' section

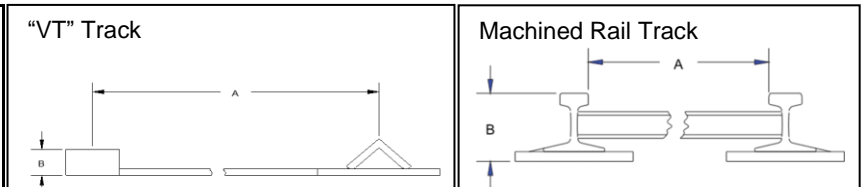
30565 Track, per 10' section

60565 Track, per 10' section

60840 Track, per 10' section

60840 Track, per 10' section

MODEL	A	B
"VT"	42"	1"
3042 (Rail)	42"	3"
30565 (Rail)	56-1/2"	3-1/2"
60565 (Rail)	56-1/2"	4-7/8"
60840 (Rail)	84"	4-7/8"



**Terms:** Pandjiris, Inc. Standard terms and conditions apply. f.o.b. Factory, St. Louis, Missouri, or designated ship point.

**Delivery:** Consult Factory

© 2014

#### PRICE LIST

For Bulletin No. : MAN.  
Effective Date : January 2014  
Page No. : D-14

Prices and specifications subject to change without notice!

Printed in U.S.A