

# PANDJIRIS, INC

5151 Northrup • St. Louis, MO 63110 • (314) 776-6893

## 20,000 LB. CAPACITY WELDING POSITIONER

The **Model 200-12 MVRMTAB Positioner** has a motorized variable speed rotation with Forward-Stop-Reverse switch and dynamic braking. The rotation speed is variable from 0.018 to 0.54 RPM with motorized tilt infinitely variable through 135 degrees. A 66" square table with adjustable height to allow full tilting capability is standard. Six positions with pinned hole locations. All wiring conforms to National Electrical Code Standards. The positioner operates on 460-volt, three phase, 60 cycle input power, 15 amps (230V, 30 amps, available upon request). When ordering specify 230 or 460 volts. A field changeable plug-in hand pendant includes "Forward-Stop-Reverse-Weld/Rapid-E-Stop" buttons and a speed adjustment potentiometer on 25' of cable as standard. Tilt Up/Down Pushbuttons located on the side of the main electrical enclosure. Control voltage is 24 VAC. Equipment is high frequency protected.

Load capacity .....20,000 lb. 12-inch overhung from face of table, 12-inch eccentricity.  
Rotational motor size .....5 H.P. motor.  
Rotation speed .....Variable from 0.018 to 0.54 RPM.  
Rotation torque (R<sub>t</sub>) .....240,000-inch pounds.  
Swing radius .....48" to 74" @ 90° tilt  
Tilt range .....0 through 135 degrees, motorized.  
Tilt motor size .....5 H.P. AC Brakemotor.  
Tilt Speed .....135 degrees in 45 seconds.  
Tilt Torque (T<sub>t</sub>) .....420,000-inch pounds inherent.

The **Model 200-12 MVRMT-VPL Positioner** is the same as Adjustable Base unit except with vertical power lift via acme jack screw, linear rail guide bearings, 3hp Brakemotor, 20 IPM, overtravel limit switch protection. Up/Down push buttons momentary contact located in the side of the electrical enclosure next to the Tilt Up/Down push buttons. **59 ½" square** table height infinitely adjustable between 58" and 78" above floor line. Rotation Centerline at 90 degrees forward tilt is 49" to 69" above the floor line with swing radius at 51 ¾" to 69 ¾".

## Optional Accessories

Foot switch with compatible plug for Forward/Stop/Reverse (speed potentiometer on hand pendant)  
Foot switch, Variable Speed with compatible plug  
Preset digital tachometer with compatible plug reads speed in RPM  
Dialweld®, (shows linear speed in IPM for diameter set on diameter selector. Dial diameter to be welded, dial weld speed, table RPM is automatically set to weld diameter at selected welding speed) digital meter with compatible plug reads IPM or CmPM  
25' Extension Cable with compatible plugs for standard pendants and accessories  
Model 600 PT Copper Welding Ground  
Model 1200 PT Copper Welding Ground  
66" Round Table  
Encoder Feedback for Precision Speed Control  
Hand Pendant with Tilt Up/Down in Addition to Standard Features, In Lieu of Standard Pendant  
Wireless Foot Switch or Wireless Hand Pendant

**Terms:** Pandjiris, Inc. standard terms and conditions apply, f.o.b. Factory, St. Louis, Missouri, or designated ship point.

**Delivery:** Consult Factory

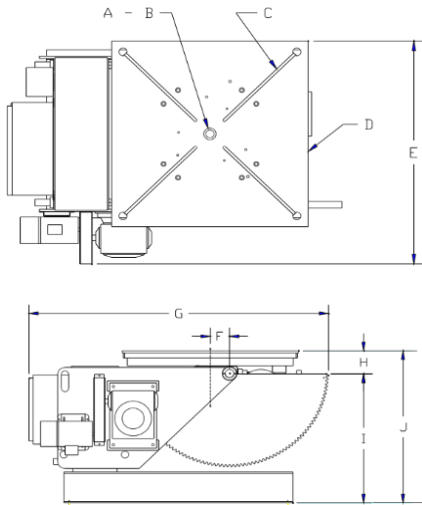
Approximate shipping weight: 9,100 lbs.

### PRICE LIST

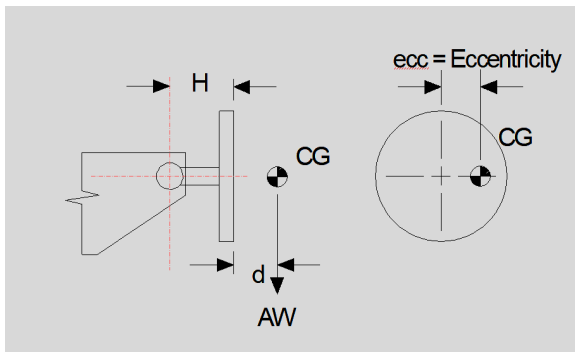
For Bulletin No. : PC 0991  
Effective Date : October 2020  
Page Number : A-25

# PANDJIRIS, INC

5151 Northrup • St. Louis, MO 63110 • (314) 776-6893



A	Pilot Hole	5.00" $\phi$ x 1/4" Deep
B	Thru Hole	None
C	"T" Slot Quantity	4
	ANSI Std "T" Nut size	1"
D	Table Size	66" sq.
E	Overall Width	80"
F	Rotation Offset	0"
G	Overall Length	110-1/2"
H	Inherent Overhang	9"
I	Tilt Axis Height	49"
J	Table Height min	58"
	(6) Positions max	88"



RATED OVERHUNG LOAD	
d (inches)	AW (pounds)
0 to 12	20,000
18	15,556
24	12,727
30	10,769
36	9,333
42	8,235
48	7,386

**Terms:** Pandjiris, Inc. standard terms and conditions apply, f.o.b. Factory, St. Louis, Missouri, or designated ship point.

**Delivery:** Consult Factory

Approximate shipping weight: 9,100 lbs.

### PRICE LIST

For Bulletin No. : PC 0991  
 Effective Date : October 2020  
 Page Number : A-26