

PANDJIRIS, INC

5151 Northrup • St. Louis, MO 63110 • (314) 776-6893

3,000 LB. WELDING POSITIONER MODEL

The Model 30-6 MVRMTFB Positioner has a motorized variable speed rotation with Forward-Stop-Reverse switch and dynamic braking. The rotation speed is variable from 0.046 to 1.40 RPM with motorized tilt infinitely variable through 135 degrees. A 30" square table with fixed height at 32-5/8" to allow full tilting capability is standard. All wiring conforms to National Electrical Code Standards. The positioner operates on 460-volt, three phase, 60 cycle input power, 10 amps (230V three phase, 15 amps) or (120V single phase, 20 amps) available upon request. When ordering specify 120, 230 or 460 volts. A field changeable plug-in hand pendant includes "Forward-Stop-Reverse-Weld/Rapid-E-Stop" buttons and a speed adjustment potentiometer on 25' of cable as standard. Tilt Up/Down Pushbuttons located on the side of the main electrical enclosure. Control voltage is 24 VAC. Equipment is high frequency protected.

Load capacity3,000 lb. 6-inch overhung from face of table, 6-inch eccentricity.
Rotational motor size.....1 H.P. motor.
Rotation speedVariable from .046 to 1.40 RPM.
Rotation torque (R_t) 18,000 Inch-pounds
Swing radius28" @ 90° tilt
Tilt range0 through 135 degrees, motorized.
Tilt motor size3/4 H.P. AC Brakemotor.
Tilt Speed135 degrees in 36 seconds.
Tilt torque (T_t)35,250-inch pounds inherent.

The Model 30-6 MVRMTAB Positioner is the same as above except with an adjustable base and a swing radius from 28" to 47" @ 90° tilt. Five positions with pinned hole locations.

The Model 30-6 MVRMT-VPL Positioner is the same as Fixed Base unit except with vertical power lift via acme jack screw, linear rail guide bearings, 1hp Brakemotor, 30 IPM, overtravel limit switch protection. Up/Down push buttons momentary contact located in the side of the electrical enclosure next to the Tilt Up/Down push buttons. Table height infinitely adjustable between 34" and 48" above floor line. Rotation Centerline at 90 degrees forward tilt is 32 1/4" to 46 1/4" above the floor line with swing radius at 29" to 42". 460/3/60 input draws 10 Amps (120/1/60 @ 20 Amps).

Optional Accessories

Foot switch with compatible plug for Forward/Stop/Reverse (speed potentiometer on hand pendant)
Foot switch, Variable Speed with compatible plug
Preset digital tachometer with compatible plug reads speed in RPM
Dialweld®, (shows linear speed in IPM for diameter set on diameter selector. Dial diameter to be welded, dial weld speed, table RPM is automatically set to weld diameter at selected welding speed) digital meter with compatible plug reads IPM or CmPM
25' Extension Cable with compatible plugs for standard pendants and accessories
Model 600 PT Copper Welding Ground
Model 1200 PT Copper Welding Ground
For 30" Round Table
For Blanchard Ground Table
OS-15 Outboard Support Stand, 1,500# capacity
OS-30 Outboard Support Stand, 3,000# capacity
OS-30 Outboard Support Stand with Steel Wheels
Encoder Feedback for Precision Speed Control
Hand Pendant with Tilt Up/Down in Addition to Standard Features, In Lieu of Standard Pendant
Wireless Foot Switch or Wireless Hand Pendant

Terms: Pandjiris, Inc. standard terms and conditions apply, f.o.b. Factory, St. Louis, Missouri, or designated ship point.

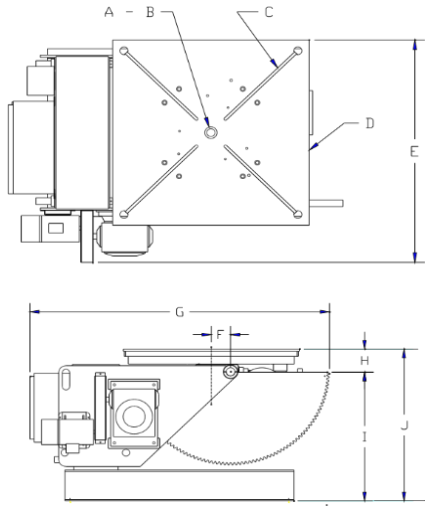
Delivery: Consult Factory
Approximate shipping weight: 1,750 lbs.
© 2014

PRICE LIST

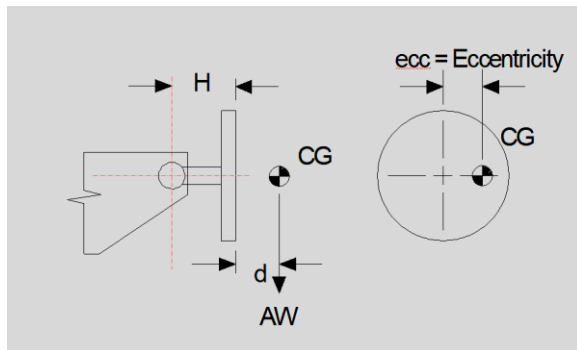
Effective Date : September 2020
Page Number : A-13

PANDJIRIS, INC

5151 Northrup • St. Louis, MO 63110 • (314) 776-6893



A	Pilot Hole	2-3/4" ϕ x 1/4" Deep
B	Thru Hole	1-1/2" ϕ
C	"T" Slot Quantity	4
	ANSI Std "T" Nut size	5/8"
D	Table Size	30" sq.
E	Overall Width	39-1/4"
F	Rotation Offset	4"
G	Overall Length	58-14"
H	Inherent Overhang	5-3/4"
I	Tilt Axis Height	27-1/4" – Adj. Base
		26-7/8" Fixed Base
J	Table Height	min 33"
	(5) Positions	max 53"



RATED OVERHUNG LOAD	
d (inches)	AW (pounds)
0 to 6	3,000
12	1,986
18	1,484
24	1,185
30	986
36	844
42	738

Terms: Pandjiris, Inc. standard terms and conditions apply, f.o.b. Factory, St. Louis, Missouri, or designated ship point.

Delivery: Consult Factory
Approximate shipping weight: 1,750 lbs.

PRICE LIST

Effective Date : September 2020
Page Number : A-14