

PANDJIRIS, INC

5151 Northrup • St. Louis, MO 63110 • (314) 776-6893

12,000 LB HEAD AND TAILSTOCK POSITIONER (MODEL HTS-120)

The **Model HTS-120 Head and Tailstock Positioner** is a quality Head and Tailstock designed to support and rotate 12,000 pounds. The frames are rigid box section, all welded construction. Additional rigidity is accomplished by utilizing oversize anti-friction bearings and by having a welded connection between table and kingpin. The table is driven by an A.C. Brakemotor, through roller chain and sprockets to a high efficiency worm reducer and a final spur gear stage. Control voltage is 24 VAC. Equipment is high frequency protected.

Supporting Capacity 12,000 pounds total, 6,000 pounds each end at 12" maximum overhang from face of table.
Rotation Torque (R_t)..... 72,000 inch pounds.
Rotation Motor..... 3 H.P. A.C. Brakemotor.
Rotation Speed..... 1.00 RPM constant speed.
Electricals..... 230 volt, 15 amps/460 volt, 10 amps, three phase, 60 cycle input with 24 volt control circuits and conforms to the National Electrical Code. Thermal overload protection in reversing starter. Momentary push button controls for "Forward-Reverse" are contained in a pendant station with 25 ft. of rubber covered cable.

Optional Accessories for Variable Speed HTS-120

For variable speed 0.033 to 1.00 RPM, 230 Volts, 20 Amps-
460 Volts, 10 Amps, Three Phase, 60 Hz

Foot switch with compatible plug for Forward/Stop/Reverse (speed potentiometer on hand pendant)

Foot switch, Variable Speed with compatible plug

Preset digital tachometer with compatible plug reads speed in RPM

Dialweld®, (shows linear speed in IPM for diameter set on diameter selector.

Dial diameter to be welded, dial weld speed, table RPM is automatically set to weld diameter at selected welding speed) digital meter with compatible plug reads IPM or CmPM

Encoder feedback for precision speed control

Wireless Foot Switch or Wireless Hand Pendant

25' Extension Cable with compatible plugs for standard pendants and accessories

Model 600 PT Copper Welding Ground*

Model 1200 PT Copper Welding Ground*

For special voltages, Add..... Consult Factory

* Welding grounds available on constant speed and variable speed units.

Terms: Pandjiris, Inc. standard terms and conditions apply, f.o.b. Factory, St. Louis, Missouri, or designated ship point.

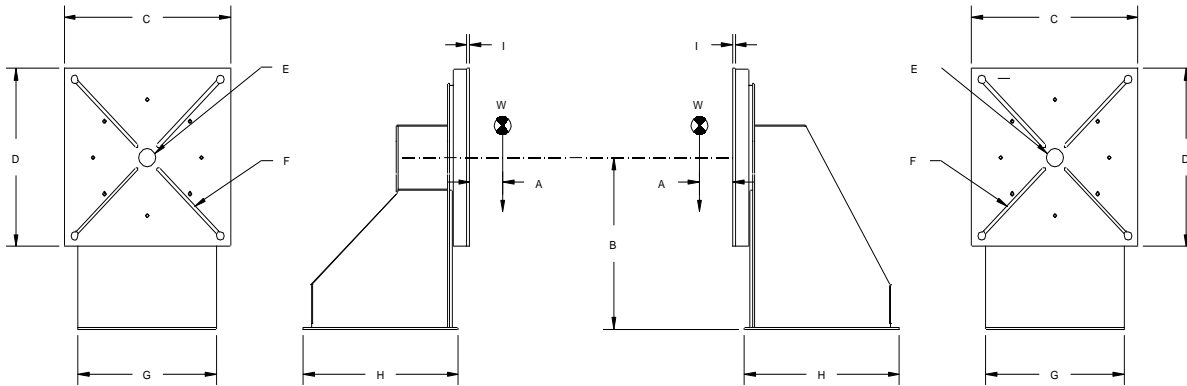
Delivery: Consult Factory
Approximate shipping weight: Headstock – 2,500 Pounds
Tailstock – 1,500 Pounds

PRICE LIST

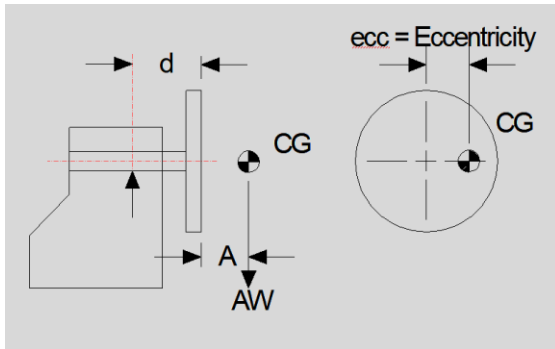
Effective Date : May 2020
Page Number : H-4

PANDJIRIS, INC

5151 Northrup • St. Louis, MO 63110 • (314) 776-6893



A	Overhung C.G.	12"	G	Width	HS	40"
B	Rotation Centerline	36"			TS	42"
C	Table	48"	H	Length	HS	40"
D	Table	48"			TS	43-3/4"
E	Pilot Hole	3-15/16" x 1/4"	I	Table Thickness	5/8"	
F	(4) "T" Slots to accept Standard ANSI 5/8" "T" Nut		W	Weight Capacity Each/Total	6,000/12,000	



Rated Overhung Load	
A (inches)	AW (pounds)
0 to 12	6,000
15	5,079
18	4,608
21	3,887
24	3,478
27	3,148
36	2,449

Terms: Pandjiris, Inc. standard terms and conditions apply, f.o.b. Factory, St. Louis, Missouri, or designated ship point.

Delivery: Consult Factory
 Approximate shipping weight: Headstock – 2,500 Pounds
 Tailstock – 1,500 Pounds

© 2014

Prices and specifications subject to change without notice!

PRICE LIST

Effective Date : May 2020
 Page Number : H-3

Printed in U.S.A.