

PANDJIRIS, INC

5151 Northrup • St. Louis, MO 63110 • (314) 776-6893

20,000 LB HEAD AND TAILSTOCK POSITIONER (MODEL HTS-200)

The **Model HTS-200 Head and Tailstock Positioner** is a quality Head and Tailstock designed to support and rotate 20,000 pounds. The frames are rigid box section, all welded construction. Additional rigidity is accomplished by utilizing oversize anti-friction bearings and by having a welded connection between table and kingpin. The table is driven by an A.C. Brakemotor, through roller chain and sprockets to a high efficiency worm reducer and a final spur gear stage. Control voltage is 24 VAC. Equipment is high frequency protected.

Supporting Capacity20,000 pounds total, 10,000 pounds each end at 12" maximum overhang from face of table.
Rotation Torque (R_t)120,000 inch pounds.
Rotation Motor3 H.P. A.C. Brakemotor.
Rotation Speed1.00 RPM constant speed.
Net WeightHeadstock 3,100 lbs, Tailstock 1,700 lbs.
Electricals230 volt, 15 amps/460 volt, 10 amps, three phase, 60 cycle input with 24 volt control circuits and conforms to the National Electrical Code. Thermal overload protection in reversing starter. Momentary push button controls for "Forward-Reverse" are contained in a pendant station with 25 ft. of rubber covered cable.

Optional Accessories for Variable Speed HTS-200

For variable speed 0.03 to 0.80 RPM, 230 Volts, 20 Amps-
460 Volts, 10 Amps, Three Phase, 60 Hz
Foot switch with compatible plug for Forward/Stop/Reverse (speed potentiometer on hand pendant)
Foot switch, Variable Speed with compatible plug
Preset digital tachometer with compatible plug reads speed in RPM
Dialweld®, (shows linear speed in IPM for diameter set on diameter selector.
Dial diameter to be welded, dial weld speed, table RPM is automatically set to weld diameter at selected welding speed) digital meter with compatible plug reads IPM or CmPM
Encoder feedback for precision speed control
Wireless Foot Switch or Wireless Hand Pendant
For special voltages, addConsult Factory
25' Extension Cable with compatible plugs for standard pendants and accessories
Model 600 PT Copper Welding Ground*
Model 1200 PT Copper Welding Ground*

* Welding grounds available on constant speed and variable speed units.

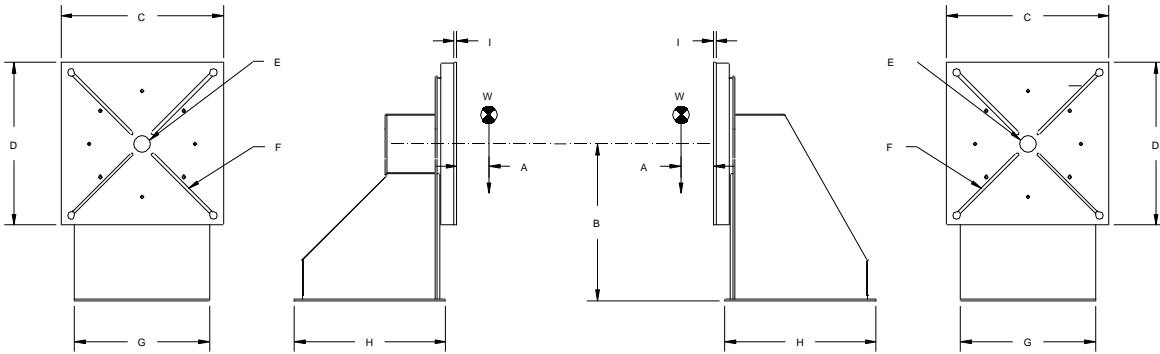
Terms: Pandjiris, Inc. standard terms and conditions apply, f.o.b. Factory, St. Louis, Missouri, or designated ship point.

Delivery: Consult Factory
Approximate shipping weight: Headstock – 3,300 Pounds
Tailstock – 1,900 Pounds

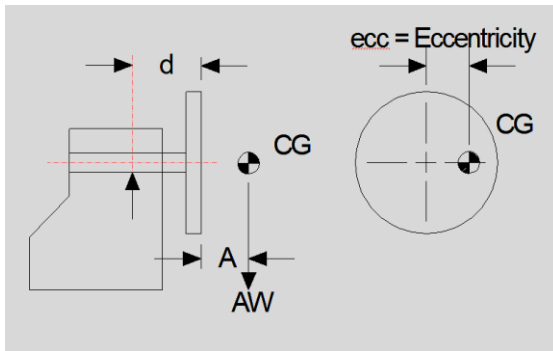
| PRICE LIST |
|---------------------------|
| Effective Date : May 2020 |
| Page Number : H - 5 |

PANDJIRIS, INC

5151 Northrup • St. Louis, MO 63110 • (314) 776-6893



| | | | | | | |
|---|---|---------------|---|----------------------------|---------------|---------|
| A | Overhung C.G. | 12" | G | Width | HS | 40" |
| B | Rotation Centerline | 36" | | | TS | 42" |
| C | Table | 48" | H | Length | HS | 40" |
| D | Table | 48" | | | TS | 43-3/4" |
| E | Pilot Hole | 5-1/4" x 1/4" | I | Table Thickness | 5/8" | |
| F | (4) "T" Slot to accept Standard ANSI 5/8" "T" Nut | | W | Weight Capacity Each/Total | 10,000/20,000 | |



| Rated Overhung Load | |
|---------------------|-------------|
| A (inches) | AW (pounds) |
| 0 to 12 | 10,000 |
| 15 | 8,513 |
| 18 | 7,412 |
| 21 | 6,563 |
| 24 | 5,888 |
| 27 | 5,339 |
| 36 | 4,172 |

Terms: Pandjiris, Inc. standard terms and conditions apply, f.o.b. Factory, St. Louis, Missouri, or designated ship point.

Delivery: Consult Factory
Approximate shipping weight: Headstock – 3,300 Pounds
Tailstock – 1,900 Pounds

PRICE LIST

Effective Date : May 2020
Page Number : H - 6