

PANDJIRIS, INC

5151 Northrup • St. Louis, MO 63110 • (314) 776-6893

40,000 LB HEAD AND TAILSTOCK POSITIONER (MODEL HTS-400)

The **Model HTS-400 Head and Tailstock Positioner** is a quality Head and Tailstock designed to support and rotate 40,000 pounds. The frames are rigid box section, all welded construction. Additional rigidity is accomplished by utilizing oversize anti-friction bearings and by having a welded connection between table and kingpin. The table is driven by an A.C. Brakemotor, through roller chain and sprockets to a high efficiency worm reducer and a final spur gear stage. Control voltage is 24 VAC. Equipment is high frequency protected.

Supporting Capacity 40,000 pounds total, 20,000 pounds each end at 12" maximum overhang from face of table.
Rotation Torque (R_t) 240,000 inch pounds.
Rotation Motor 5 H.P. A.C. Brakemotor.
Rotation Speed 0.57 RPM constant speed.
Electricals 230 volt, 20 amps/460 volt, 10 amps, three phase, 60 cycle input with 24 volt control circuits and conforms to the National Electrical Code. Thermal overload protection in reversing starter. Momentary push button controls for "Forward-Reverse" are contained in a pendant station with 25 ft. of rubber covered cable

Optional Accessories for Variable Speed HTS-400

For variable speed 0.03 to 0.70 RPM, 230 Volts, 30 amps-
460 Volts, 15 Amps, Three Phase, 60 Hz

Foot switch with compatible plug for Forward/Stop/Reverse (speed potentiometer on hand pendant)

Foot switch, Variable Speed with compatible plug

Preset digital tachometer with compatible plug reads speed in RPM

Dialweld® (shows linear speed in IPM for diameter set on diameter selector.

Dial diameter to be welded, dial weld speed, table RPM is automatically set to weld diameter at selected welding speed) digital meter with compatible plug reads IPM or CmPM

Encoder feedback for precision speed control

Wireless Foot Switch or Wireless Hand Pendant

Wireless Foot Switch or Wireless Hand Pendant

For special voltages, add Consult Factory

25' Extension Cable with compatible plugs for standard pendants and accessories

Model 600 PT Copper Welding Ground*

Model 1200 PT Copper Welding Ground*

* Welding grounds available on constant speed and variable speed units.

Terms: Pandjiris, Inc. standard terms and conditions apply, f.o.b. Factory, St. Louis, Missouri, or designated ship point.

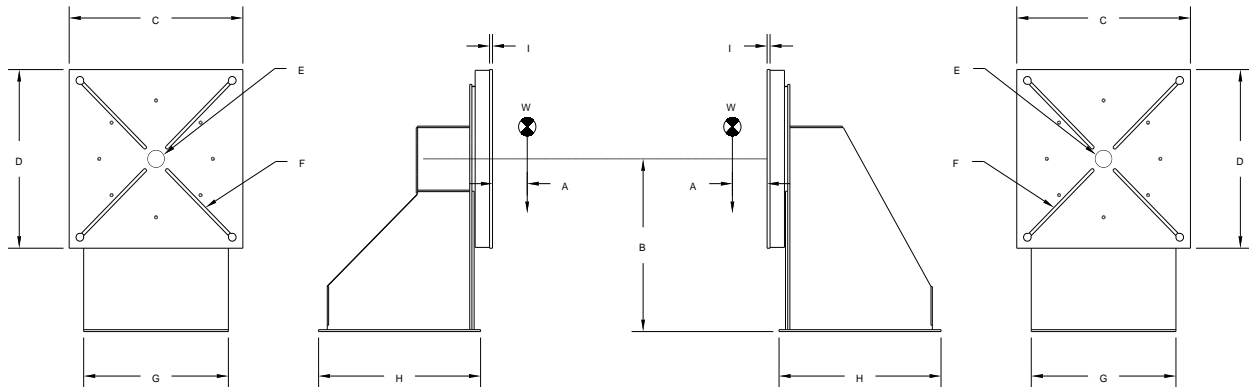
Delivery: Consult Factory
Approximate shipping weight: Headstock – 5,000 Pounds
Tailstock – 2,600 Pounds

PRICE LIST

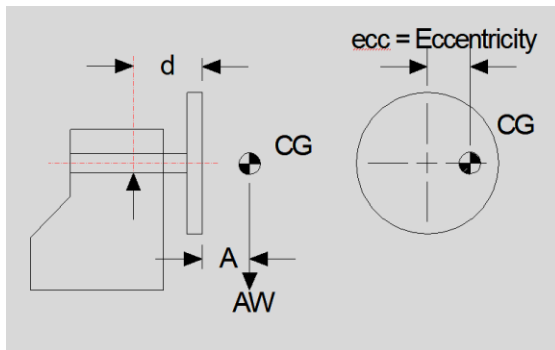
Effective Date : May 2020
Page Number : H-9

PANDJIRIS, INC

5151 Northrup • St. Louis, MO 63110 • (314) 776-6893



A	Overhung C.G.	12"	G	Width	HS	47-1/2"
B	Rotation Centerline	50"			TS	47-1/2"
C	Table	59"	H	Length	HS	50"
D	Table	59"			TS	50"
E	Pilot Hole	5-5/8" x 1/4"	I	Table Thickness	3/4"	
F	(4) "T" Slots to accept Standard ANSI 1" "T" Nut		W	Weight Capacity Each/Total	20,000/40,000	



Rated Overhung Load	
A (inches)	AW (pounds)
0 to 12	20,000
15	17,125
18	14,973
21	13,301
24	11,965
27	10,873
36	8,5365

Terms: Pandjiris, Inc. standard terms and conditions apply, f.o.b. Factory, St. Louis, Missouri, or designated ship point.

Delivery: Consult Factory
Approximate shipping weight: Headstock – 5,000 Pounds
Tailstock – 2,600 Pounds

PRICE LIST

Effective Date : May 2020
Page Number : H-10