

# PANDJIRIS, INC

5151 Northrup • St. Louis, MO 63110 • (314) 776-6893

## 50,000 LB HEAD AND TAILSTOCK POSITIONER (MODEL HTS-500)

The **Model HTS-500 Head and Tailstock Positioner** is a quality Head and Tailstock designed to support and rotate 50,000 pounds. The frames are rigid box section, all welded construction. Additional rigidity is accomplished by utilizing oversize anti-friction bearings and by having a welded connection between table and kingpin. The table is driven by an A.C. Brakemotor, through roller chain and sprockets to a high efficiency worm reducer and a final spur gear stage. Control voltage is 24 VAC. Equipment is high frequency protected.

Supporting Capacity ..... 50,000 pounds total, 25,000 pounds each end at 12" maximum overhang from face of table.  
Rotation Torque (R<sub>t</sub>) ..... 300,000 inch pounds.  
Rotation Motor ..... 7-1/2 H.P. A.C. Brakemotor.  
Rotation Speed ..... 0.85 RPM constant speed.  
Electricals ..... 230 volt, 25 amps/460 volt, 15 amps, three phase, 60 cycle input with 24 volt control circuits and conforms to the National Electrical Code. Thermal overload protection in reversing starter. Momentary push button controls for "Forward-Reverse" are contained in a pendant station with 25 ft. of rubber covered cable.

### Optional Accessories for Variable Speed HTS-500

For variable speed 0.03 to 0.50 RPM, 230 Volts, 25 Amps-  
460 Volts, 15 Amps, Three Phase, 60 Hz

Foot switch with compatible plug for Forward/Stop/Reverse (speed potentiometer on hand pendant)

Foot switch, Variable Speed with compatible plug

Preset digital tachometer with compatible plug reads speed in RPM

Dialweld®, (shows linear speed in IPM for diameter set on diameter selector.

Dial diameter to be welded, dial weld speed, table RPM is automatically set to weld diameter at selected welding speed) digital meter with compatible plug reads IPM or CmPM

Encoder feedback for precision speed control

Wireless Foot Switch or Wireless Hand Pendant

For special voltages, Add ..... Consult Factory

25' Extension Cable with compatible plugs for standard pendants and accessories

Model 600 PT Copper Welding Ground\*

Model 1200 PT Copper Welding Ground\*

\* Welding grounds available on constant speed and variable speed units.

**Terms:** Pandjiris, Inc. standard terms and conditions apply,  
f.o.b. Factory, St. Louis, Missouri, or designated ship point.

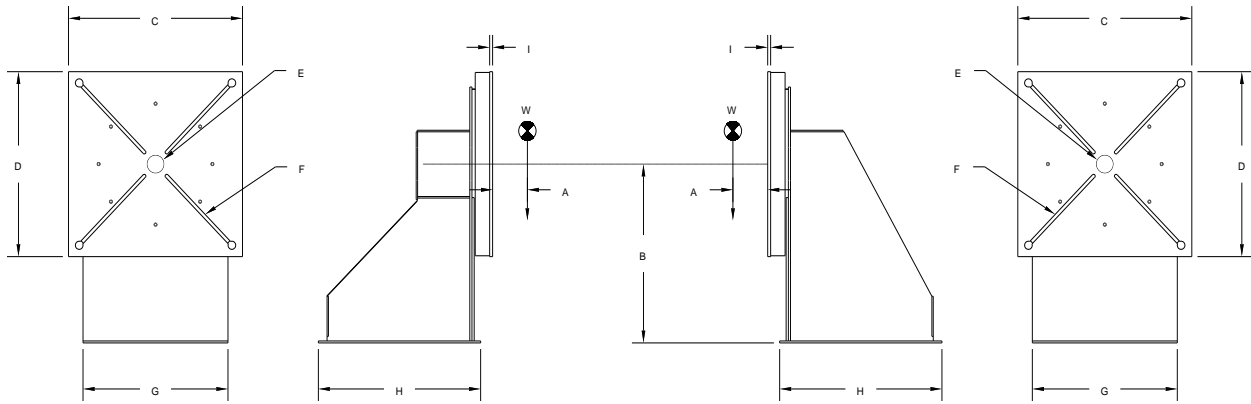
**Delivery:** Consult Factory  
Approximate shipping weight:  
Headstock – 6,900 Pounds  
Tailstock – 4,200 Pounds

#### PRICE LIST

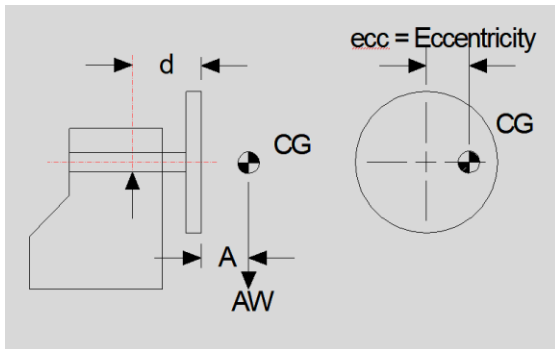
Effective Date : May 2020  
Page Number : H-11

# PANDJIRIS, INC

5151 Northrup • St. Louis, MO 63110 • (314) 776-6893



A	Overhung C.G.	12"	G	Width	HS	50"
B	Rotation Centerline	58"			TS	50"
C	Table	60"	H	Length	HS	56"
D	Table	60"			TS	56"
E	Pilot Hole	6" x 1/4"	I	Table Thickness	3/4"	
F	(4) "T" Slots to accept Standard ANSI 1" "T" Nut		W	Weight Capacity Each/Total	25,000/50,000	



Rated Overhung Load	
A (inches)	AW (pounds)
0 to 12	25,000
15	21,672
18	19,126
21	17,116
24	15,488
27	14,142
36	11,219

**Terms:** Pandjiris, Inc. standard terms and conditions apply, f.o.b. Factory, St. Louis, Missouri, or designated ship point.

**Delivery:** Consult Factory  
 Approximate shipping weight:  
 Headstock – 6,900 Pounds  
 Tailstock – 4,200 Pounds

## PRICE LIST

Effective Date : May 2020  
 Page Number : H-12