

# PANDJIRIS, INC

5151 Northrup • St. Louis, MO 63110 • (314) 776-6893

## 6,000 LB HEAD AND TAILSTOCK POSITIONER (MODEL HTS-60)

The **Model HTS-60 Head and Tailstock Positioner** is a quality Head and Tailstock designed to support and rotate 6,000 pounds. The frames are rigid box section, all welded construction. Additional rigidity is accomplished by utilizing oversize anti-friction bearings and by having a welded connection between table and kingpin. The table is driven by an A.C. Brakemotor, through roller chain and sprockets to a high efficiency worm reducer and a final spur gear stage. Control voltage is 24 VAC. Equipment is high frequency protected.

Supporting Capacity ..... 6,000 pounds total, 3,000 pounds each end at 5" maximum overhang from face of table.  
Rotation Torque (Rt)..... 15,000 inch pounds.  
Rotation Motor ..... 3/4 H.P. A.C. Brakemotor.  
Rotation Speed..... 1.00 RPM constant speed.  
Electricals ..... 230 volt, 4 amps /460 volt, 2 amps, three phase, 60 cycle input with 24 volt control circuits and conforms to the National Electrical Code. Thermal overload protection in reversing starter. Momentary push button controls for "Forward-Reverse" are contained in a pendant station with 25 ft. of rubber covered cable.

### Optional Accessories for Variable Speed HTS-60

For variable speed 0.025 to 1.00 RPM, 115 Volts, 20 Amps Single Phase, 60 Hz  
Foot switch with compatible plug for Forward/Stop/Reverse (speed potentiometer on hand pendant)  
Foot switch, Variable Speed with compatible plug  
Preset digital tachometer with compatible plug reads speed in RPM  
Dialweld®, (shows linear speed in IPM for diameter set on diameter selector.  
Dial diameter to be welded, dial weld speed, table RPM is automatically set to weld diameter at selected welding speed) digital meter with compatible plug reads IPM or CmPM  
Tach feedback for precision speed control  
Wireless Foot Switch or Wireless Hand Pendant  
For special voltages, add ..... Consult Factory  
25' Extension Cable with compatible plugs for standard pendants and accessories  
Model 600 PT Copper Welding Ground\*  
Model 1200 PT Copper Welding Ground\*  
Adder to make the Head and Tailstock a Pinned Elevation set\*  
- 32" to 50" Elevation Range, 6" Pinned Adjustments

\* Options available on constant speed and variable speed units.

**Terms:** Pandjiris, Inc. standard terms and conditions apply, f.o.b. Factory, St. Louis, Missouri, or designated ship point.

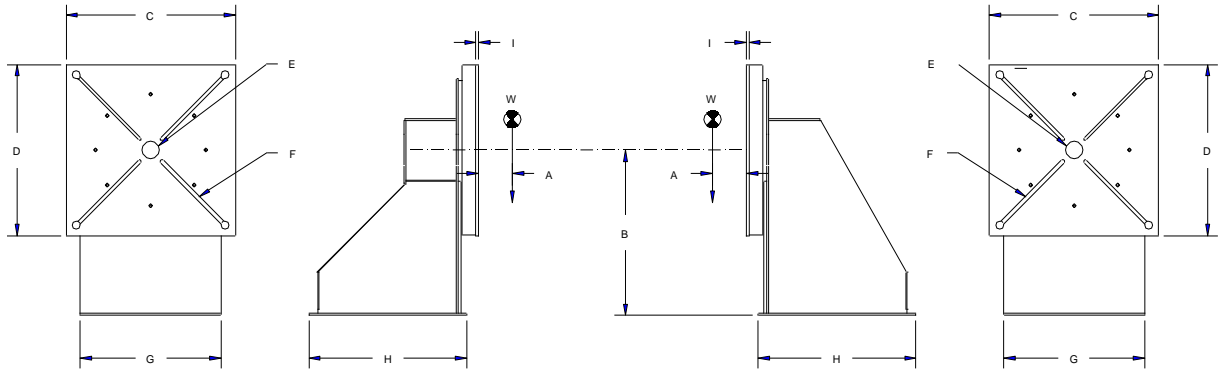
**Delivery:** Consult Factory  
Approximate shipping weight: Headstock – 1,300 Pounds  
Tailstock – 1,000 Pounds

#### PRICE LIST

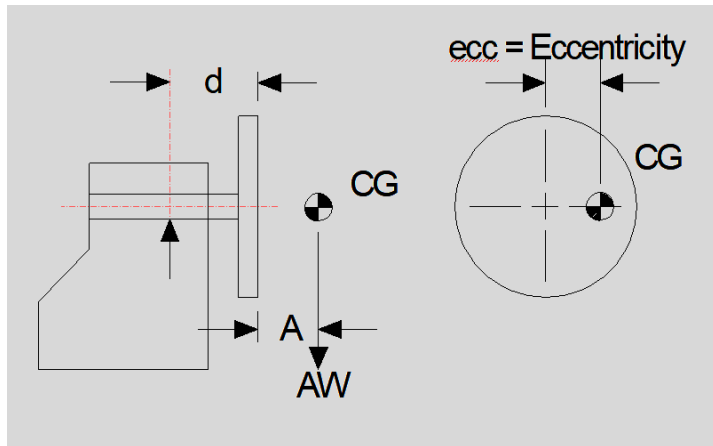
Effective Date : May 2020  
Page Number : H-1

# PANDJIRIS, INC

5151 Northrup • St. Louis, MO 63110 • (314) 776-6893



A	Overhung C.G.	5"	G	Width	HS	40"
B	Rotation Centerline	31-1/4"			TS	42"
C	Table	30"	H	Length	HS	40"
D	Table	30"			TS	41-3/4"
E	Pilot Hole	2-15/16" x 3/16"	I	Table Thickness	1/2"	
F	(4) "T" Slots to accept Standard ANSI 5/8" "T" Nut		W	Weight Capacity Each/Total	3000/6000	



Rated Overhung Load	
A (inches)	AW (pounds)
0 to 5	3,000
6	2,729
7	2,503
8	2,311
9	2,147
10	2,004
12	1,769

**Terms:** Pandjiris, Inc. standard terms and conditions apply, f.o.b. Factory, St. Louis, Missouri, or designated ship point.

**Delivery:** Consult Factory  
 Approximate shipping weight: Headstock – 1,300 Pounds  
 Tailstock – 1,000 Pounds

### PRICE LIST

Effective Date : May 2020  
 Page Number : H-2