

PANDJIRIS, INC

5151 Northrup • St. Louis, MO 63110 • (314) 776-6893

60,000 LB HEAD AND TAILSTOCK POSITIONER (MODEL HTS-600)

The **Model HTS-600 Head and Tailstock Positioner** is a quality Head and Tailstock designed to support and rotate 60,000 pounds. The frames are rigid box section, all welded construction. Additional rigidity is accomplished by utilizing oversize anti-friction bearings and by having a welded connection between table and kingpin. The table is driven by an A.C. Brakemotor, through roller chain and sprockets to a high efficiency worm reducer and a final spur gear stage. Control voltage is 24 VAC. Equipment is high frequency protected.

Supporting Capacity 60,000 pounds total, 30,000 pounds each end at 12" max overhang from face of table.
Rotation Torque (R_t) 360,000 inch pounds.
Rotation Motor 10 H.P. A.C. Brakemotor.
Rotation Speed 0.80 RPM constant speed.
Electricals 230 volt, 40 amps/460 volt, 25 amps three phase, 60 cycle input with 54 volt control circuits and conforms to the National Electrical Code. Thermal overload protection in reversing starter. Momentary push button controls for "Forward-Reverse" are contained in a pendant station with 25 ft. of rubber covered cable.

Optional Accessories for Variable Speed HTS-600

For variable speed 0.03 to 0.50 RPM, 230 Volts, 40 Amps-
460 Volts, 25 Amps, Three Phase, 60 Hz

Foot switch with compatible plug for Forward/Stop/Reverse (speed potentiometer on hand pendant)

Foot switch, Variable Speed with compatible plug

Preset digital tachometer with compatible plug reads speed in RPM

Dialweld®, (shows linear speed in IPM for diameter set on diameter selector.

Dial diameter to be welded, dial weld speed, table RPM is automatically set to weld diameter at selected welding speed) digital meter with compatible plug reads IPM or CmPM

Encoder feedback for precision speed control

For Wireless Foot Switch or Wireless Hand Pendant

For special voltages, Add Consult Factory

25' Extension Cable with compatible plugs for standard pendants and accessories

Model 600 PT Copper Welding Ground*

Model 1200 PT Copper Welding Ground*

* Welding grounds available on constant speed and variable speed units.

Terms: Pandjiris, Inc. standard terms and conditions apply, f.o.b. Factory, St. Louis, Missouri, or designated ship point.

Delivery: Consult Factory
Approximate shipping weight:
Headstock – 9,280 Pounds
Tailstock – 5,620 Pounds

© 2014

PRICE LIST

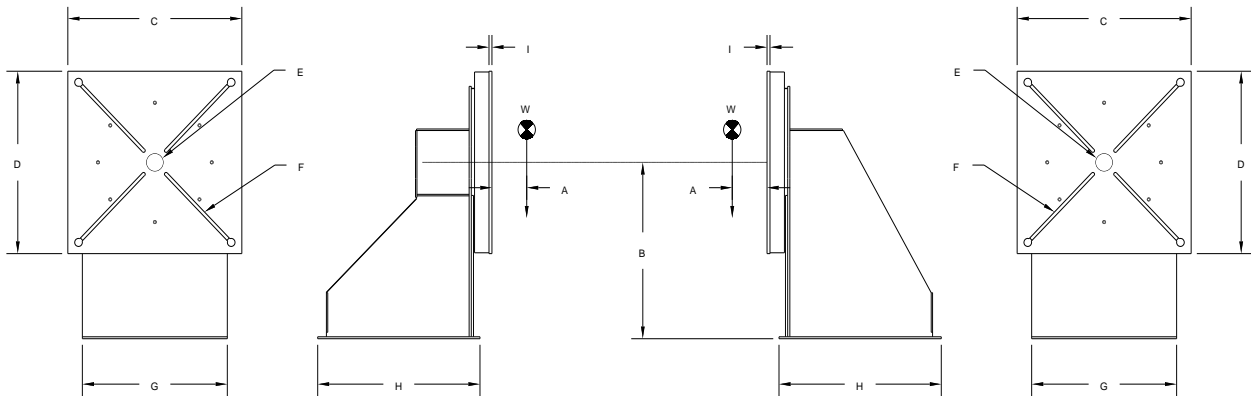
Effective Date : May 2020
Page Number : H-13

Printed in U.S.A

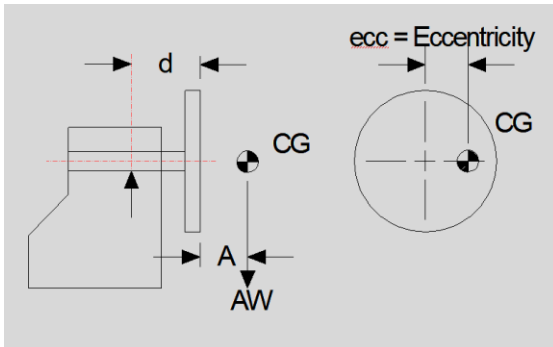
Prices and specifications subject to change without notice!

PANDJIRIS, INC

5151 Northrup • St. Louis, MO 63110 • (314) 776-6893



A	Overhung C.G.	12"	G	Width	HS	61"
B	Rotation Centerline	63-3/4"	TS		61"	
C	Table	59-1/2"	H	Length	HS	54"
D	Table	59-1/2"	TS		54"	
E	Pilot Hole	6" x 1/4"	I	Table Thickness		3/4"
F	(4) "T" Slots to accept Standard ANSI 1-1/4" "T" Nut		W	Weight Capacity Each/Total		30,000/60,000



Rated Overhung Load	
A (inches)	AW (pounds)
0 to 12	30,000
18	23,224
24	18,945
30	15,998
36	13,844
42	12,201
48	10,907

Terms: Pandjiris, Inc. standard terms and conditions apply, f.o.b. Factory, St. Louis, Missouri, or designated ship point.

Delivery: Consult Factory
 Approximate shipping weight: Headstock – 9,280 Pounds
 Tailstock – 5,620 Pounds

PRICE LIST

Effective Date : May2020
 Page Number : H-14